

HAYER & BOECKER



NIAGARA

RHINO HYDE® LINERS



RHINO HYDE THE ADVANTAGES



THE BENEFITS OF RHINO HYDE ARE UNDENIABLE.

Rhino Hyde thermoset polyurethane isn't just a cut above ordinary thermoplastic urethane (TPU) and other materials, it's in a class of its own. In fact, compared to TPU, our exclusive thermoset polyurethanes feature a wider range of hardnesses, superior abrasion resistance and more enhanced resistance to chemicals. Whatever your industry, whatever the application, choosing the toughest urethane isn't a tough choice to make.

RHINO HYDE URETHANE FEATURES BETTER:

ABRASION PROPERTIES ■ ELASTOMERIC MEMORY ■ IMPACT RESISTANCE ■ LOAD BEARING CAPACITY

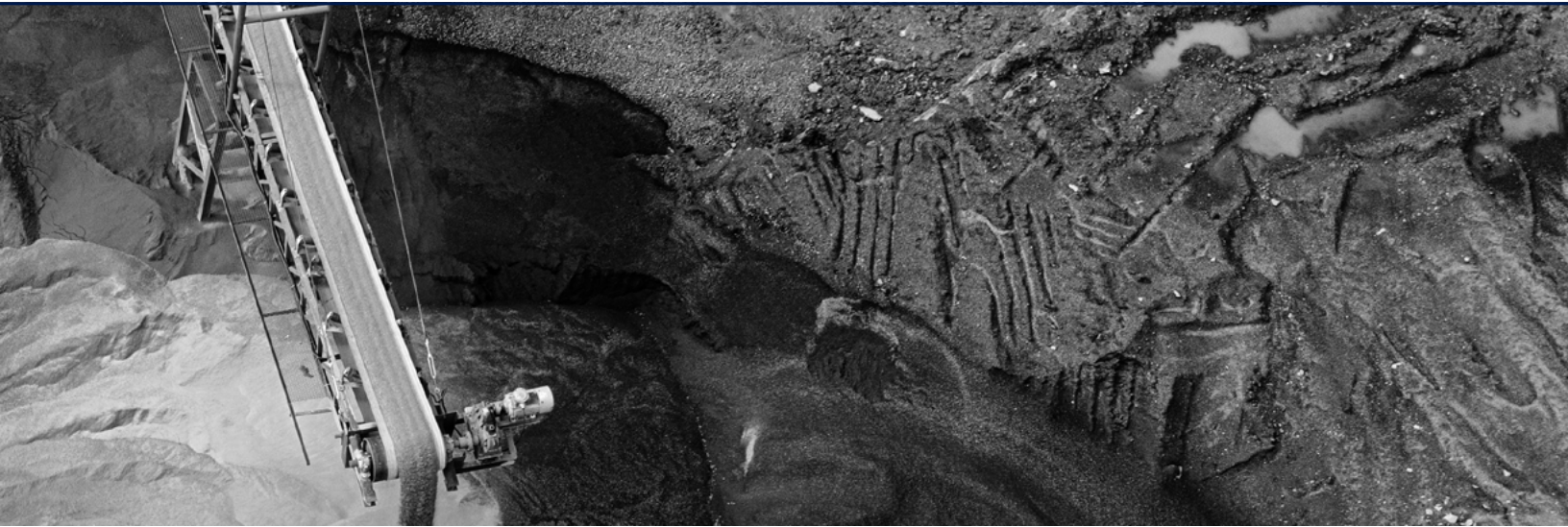
RHINO HYDE	VS.	METAL
+	Ease of Installation	-
+	Lighter Weight	-
+	Less Noise	-
+	Better Wear	-
+	Corrosion Resistance	-

RHINO HYDE	VS.	RUBBER
+	Abrasion Resistance	-
+	Load Bearing Capacity	-
+	Lighter Weight (no solid backing required)	-
+	Pourable Into More Complex Shapes	-
+	Ozone-cracking Resistance	-
+	Chemical Resistance	-

BUILT BEST TO ENDURE THE WORST.

Severe weather is unavoidable. That's why Rhino Hyde is unbreakable. In fact, our polyurethane is formulated and proven to outperform rubber, plastics and even metals in rough conditions. Because Rhino Hyde features such powerful abrasion resistance, in many applications, products are built using less material resulting in lighter weight as well as reduced maintenance and replacement costs. Just a little extra sunshine for your bottom line.

RHINO HYDE THE BENEFITS



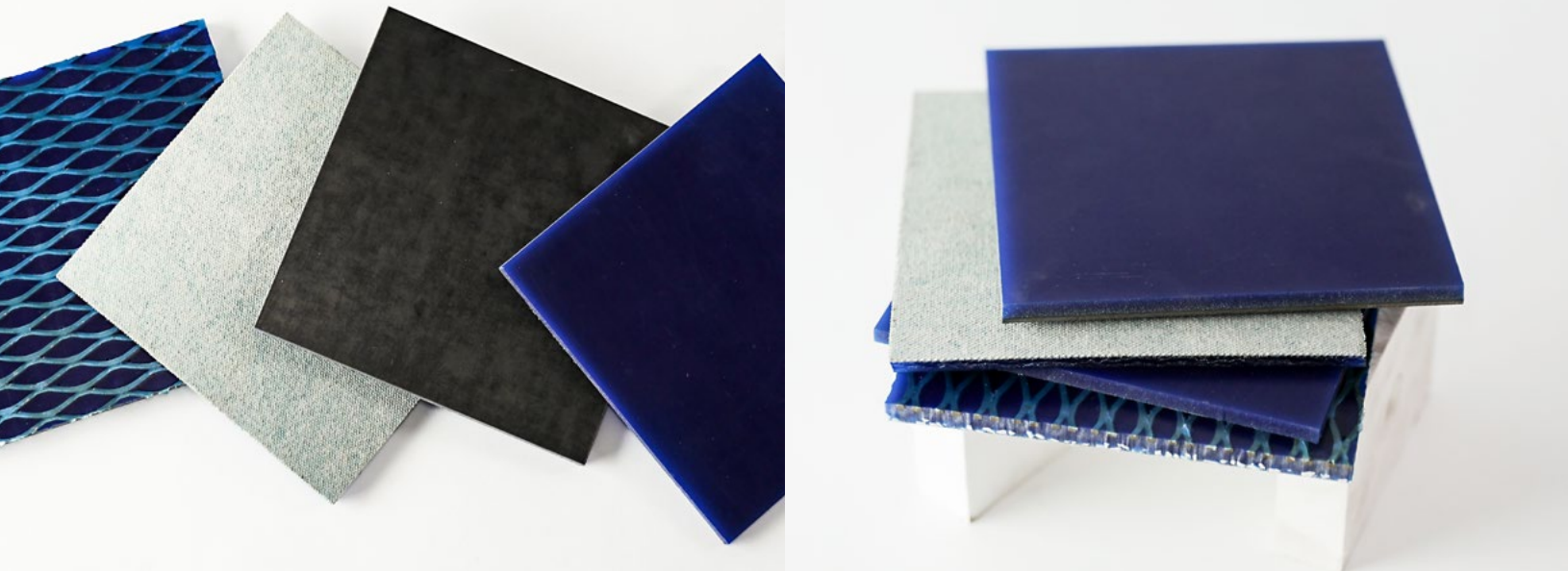
ADVANTAGES OF IN-HOUSE FORMULATING AND BLENDING CAPABILITIES:

- Best available raw materials
- Materials meet specific application requirements
- Highly competitive pricing
- Superior quality through controlled blending
- Flexibility to quickly meet changing needs
- Registered ISO 9001:2015

Rhino Hyde thermoset urethanes are superior to thermoplastic urethanes (TPUs) simply due to their basic chemistry. Take a look at how they stack up.

RHINO HYDE THERMOSET URETHANE	VS.	ORDINARY TPUs
Consist of long flexible molecules (true elastomer)		Less load bearing capacity
Will not melt or be reformed		Will melt and deform in high temps
Feature a better cross-linked chemical		Little to no cross-linking molecules
Higher durability		Likely to tear in abrasive applications

RHINO HYDE PRODUCT LINE



ORIGINAL RHINO HYDE BLUE

There's no denying Original Rhino Hyde Blue polyurethane sets the bar for extended wear resistance for the most demanding jobs. That's because we custom designed and developed it after extensive field testing across many industries and multiple applications.

Built for the ultimate in abrasion, corrosion and chemical resistance, our resilient elastomeric urethane liners are lightweight and easy to install. They also provide strong low-temperature properties and significant noise reduction.

Recommended for the bulk handling of the most abrasive materials, Rhino Hyde is available in different thicknesses, chemistries and hardnesses, depending on your application and environment.

WHAT MAKES ORIGINAL RHINO HYDE BLUE TOUGH TO BEAT?

- FDA compliant for dry bulk food handling
- European Law EC 1935/2010 compliant
- Resists corrosion, abrasion and chemicals
- Won't expand or contract with temperature changes
- Highly resistant to cuts and tears
- Available in rolls or sheets
- Dampens noise and vibration
- Low coefficient of friction
- Outperforms most plastics and metals
- Specially designed vertical molds ensure uniform thickness
- Lightweight build
- Excellent performance in a wide range of temperatures
- Available with ceramic chips for extended life
- All Rhino Hyde Products materials are always tested to ASTM* standards

* ASTM's leadership in international standards development is recognized by more than 30,000 of the world's top technical engineering, and chemical experts representing 135 industrialized countries.

RHINO HYDE PRODUCT LINE



HIGH ENERGY ORANGE

Rhino Hyde High Energy Orange is a long-lasting, premium urethane formulation specially designed for small-particle impingement abrasion. Developed in 1979, it's still a top choice for use in humid, damp and wet conditions where ordinary formulations can break down.

High Energy Orange combines high-rebound properties, outstanding hydrolytic stability and a low coefficient of friction to deliver superior abrasion resistance in the most demanding conditions.

Successfully field tested for decades, High Energy Orange is ideally suited to handle grain, fertilizer, sand and other fine particles.

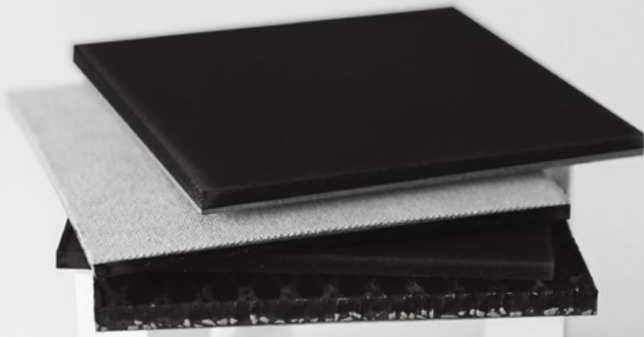
Just like with our Original Rhino Hyde Blue, Rhino Hyde High Energy Orange is available in various thicknesses, with a variety of backings, and even with an embedded ceramic featuring an expanded backing.

WHAT MAKES HIGH ENERGY ORANGE TOUGH TO BEAT?

- FDA compliant for dry bulk food handling
- European Law EC 1935/2010 compliant
- Reduces wear and product damage
- Longer wear in wet, humid environments
- Available in rolls or sheets
- Resists chemical breakdown due to moisture
- Low coefficient of friction for less sticking and build-up
- Specially designed vertical molds ensure uniform thickness
- Lightweight build
- Available with ceramic chips for extended life
- All Rhino Hyde Products materials are always tested to ASTM* standards

* ASTM's leadership in international standards development is recognized by more than 30,000 of the world's top technical engineering, and chemical experts representing 135 industrialized countries.

RHINO HYDE PRODUCT LINE



STATIC STOP

Don't let a spark spell disaster. Eliminate, reduce and neutralize static build up with Rhino Hyde Static Stop.

Combining our original sheet formulation with the latest anti-static technology, Static Stop solves both abrasion and static problems. No other urethane sheeting does both.

Static Stop reduces material build-up and flow problems caused by static in spouts and hoppers. For abrasion protection where static electricity could create hazards due to explosive dust particles and volatile materials, Rhino Hyde Static Stop is an absolute must-have.



RHINO SLYDE

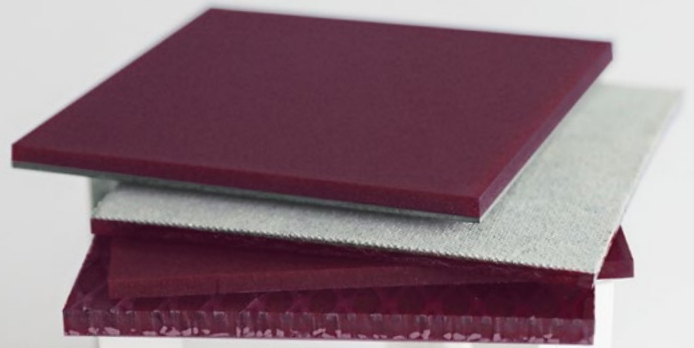
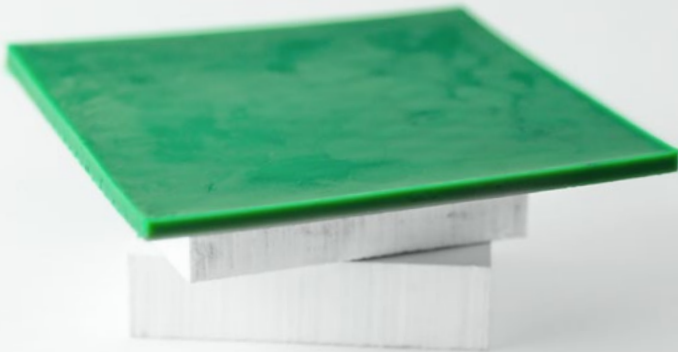
If you're looking to reduce or eliminate material sticking and flow issues, look no further than Rhino Slyde — a superior polyurethane formulation providing a smooth, slippery surface and excellent wear properties. Because Rhino Slyde is extremely low friction, it allows for clean, uninterrupted flow in dry, wet and freezing conditions. Materials simply pass over slick, non-stick Rhino Slyde with no adhesion or buildup.

For long-lasting liners, bumpers, wear plates and fabricated parts, dependable Rhino Slyde is the way to go. Field testing shows it simply outlasts steel, hardwoods and plastics in wear applications.

WHAT MAKES RHINO SLYDE TOUGH TO BEAT?

- Low coefficient of friction of - .10 (dynamic, dry)
- Virtually no expansion or contraction with temperature changes
- Excellent resistance to decomposition in water
- Easy installation with bolts, screws or welds
- Slicker and wears longer than UHMW liners
- Retains material integrity up to 225°F/107°C
- Custom molded panel available up to 4 x 8 ft./1.22 x 2.44 m.

RHINO HYDE PRODUCT LINE



HIGH TEMP

For applications requiring excellent abrasion resistance in high heat, High Temp Rhino Hyde Sheets are just the thing. In addition to having all the rugged properties of our other sheet products, these have a recommended operating range of 180°F/82°C to 250°F/121°C. Whether in higher spiking temps or consistently high temps, these sheets deliver superior performance.

RHINOX TROWELLABLE CERAMIC

Rhino Hyde Rhinox is a versatile, two-component lining material containing alumina ceramic aggregate in an epoxy binder. Designed to resist abrasion by sharp particles in slurry or dry applications, easy-troweling Rhinox is ideal for patching holes in chutes, spouts, elbows and more.

WHAT MAKES RHINOX TOUGH TO BEAT?

- Choose 1.5 or 5.0 gal./6.0 or 19.0 L. kits
- Coats 6.0 sq. ft. per gal./1472 sq. cm. per L. at 0.25 in./6.3 cm. thickness
- Contains over 83% abrasion-resistant alumina ceramic
- Adheres to clean steel and conforms to contours
- Cures overnight — or faster with applied heat
- Mixes at a 2:1 resin-to-curable ratio by weight or volume
- Resists chipping, gouging or cracking from heavy impact
- Combats degradation due to corrosion
- Effective in aqueous, mildly acidic, mildly alkaline and most solvent environments

FIRE FIGHTER

Developed in response to a fire at a Great Lakes port elevator, fire-retardant and abrasion-resistant Fire Fighter is the hottest thing going for lining chutes and spouts. Providing added protection to significantly reduce the risk of rapidly spreading flames in your facility, easy-to-install Fire Fighter carries all the resilient, wear-resistant properties of Original Rhino Hyde Blue.

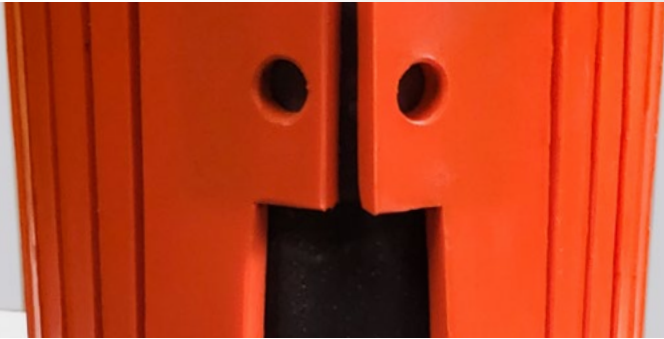
WHAT MAKES FIRE FIGHTER TOUGH TO BEAT?

- American Standard Testing Measures (ASTM)* E84-05 Class II credential
- Self-extinguishing – won't fuel or propagate a fire**
- Resists impact and abrasion
- Specially cast in vertical molds to ensure uniform thickness
- Backed by 12 years of research and development
- Outperforms most plastics and metals in high-impact applications
- FDA compliant for dry bulk food material handling
- Available with ceramic chips for extended life

*ASTM's leadership in international standards development is recognized by more than 30,000 of the world's top technical, engineering and chemical experts representing 135 industrialized countries.

**Results from flame tests with other wear polymers, including competitor's urethanes and UHMW.

RHINO HYDE PRODUCT LINE



MAGNETIC FLEX & FLAT PATCHES

The Rhino Hyde Magnetic Patch, featuring rare earth magnets, quickly and easily seals worn spots in a variety of applications.

Unlike tape and other adhesives, magnets stay secure regardless of climate and withstand high levels of vibration and impact.

WHAT MAKES OUR MAGNETIC PATCHES TOUGH TO BEAT?

- FDA compliant for dry bulk food handling
- European Law EC 1935/2010 compliant
- Next-generation design
- No welding, bolting, taping or gluing
- Saves on labor and time
- Flex Patch conforms tightly over steel pipes and spouts (7 in./17 cm. + diameter)
- Included wire handle for use in hard-to-reach areas

FLAT PATCH SIZE	FLEXIBLE PATCH SIZE
0.5 x 6 x 6 in. 0.5 x 12 x 12 in.	0.5 x 9 x 12 in.
1.27 x 15.24 x 15.24 cm. 1.27 x 30.48 x 30.48 cm.	1.27 x 22.86 x 30.48 cm.

TOLEDO ELEVATOR BUCKET

Need a bucket that won't kick the bucket? The Rhino Hyde Toledo Elevator Bucket is designed for the heaviest, most consistent loads. With our unique Slow-Speed Leg and Toledo Elevator Bucket, you can now elevate from 5,000 bph (bushels per hour) to 120,000 bph. The Slow-Speed Leg reduces dust, belt maintenance, wear on bearings and drives, and provides gentler material handling.

Conventional elevator legs use small buckets moving at 900 ft./274 m. per minute, hurling the grain into the air and releasing dust. Our system reduces belt speeds to a range of 315-450 ft./96-137 m. per minute. This way, grain discharges in a conglomerate mass containing most of the dust and limiting breakage, reducing the risk of dust ignition. Field reports show that slower belt speed also results in less wear on moving parts, which means less maintenance and downtime.

WHAT MAKES OUR TOLEDO ELEVATOR BUCKET TOUGH TO BEAT?

- Long-wearing polyurethane formulation
- Impact resistant
- Anti-static
- Non-stick design
- Slow speed and high volume
- FDA approved

RHINO HYDE PRODUCT LINE



CERATHANE ELBOW

By providing a premium seamless, wear-resistant ceramic outer layer, Rhino Hyde Cerathane-backed Elbows help increase productivity by maximizing elbow life. Custom made to your specifications, our Cerathane-backed Elbows outlast both concrete and steel by up to 5X. This unparalleled durability makes them ideal for use in dust collection and pneumatic conveying lines in the grain and salt industries, among others.

WHAT MAKES OUR CERATHANE ELBOW TOUGH TO BEAT?

- Highly abrasion resistant
- Ceramic is concentrated along the most severe wear surface
- High alumina ceramic layer delivers extended life
- Goes on elbow before installation
- Designed to your specifications
- No need for patching during use like ordinary elbows
- Stainless steel elbows available upon request

PIPE DIAMETER SIZE	ANGLE SIZES	CENTER LINE RADIUS SIZE
3 - 10 in., Custom	15° - 90°	24 - 72 in.
8 - 25 cm., Custom	15° - 90°	61 - 183 cm.

CERAFLEX

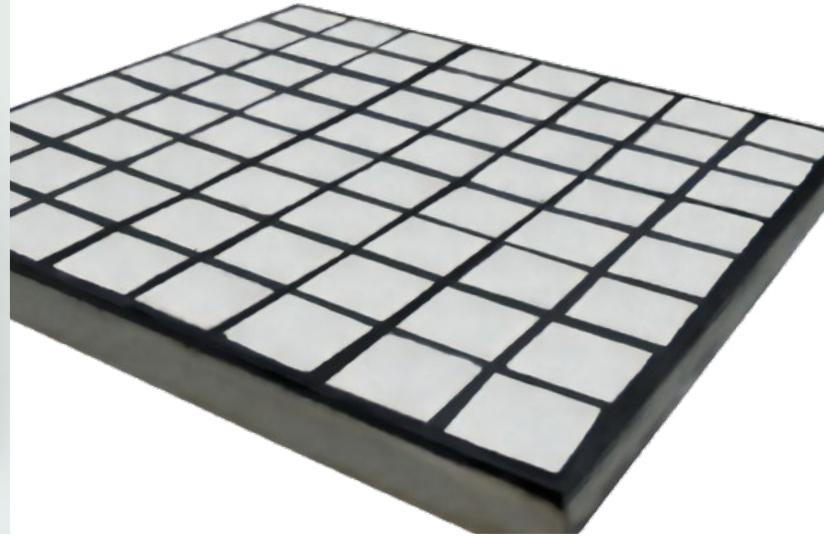
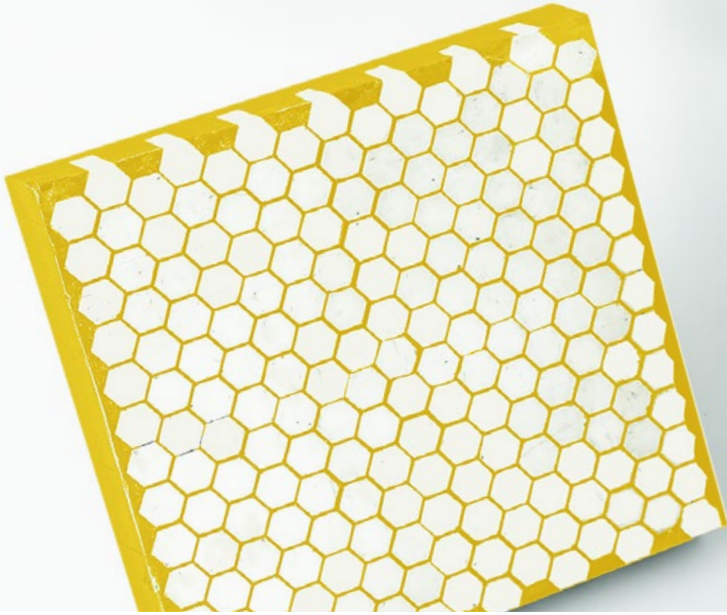
Premium Ceraflex Panels combine the unique wear resistance of heat-treated, domestically produced ceramic tile with the resiliency of urethane. Separately, both have very high wear-resistant properties. Together, the materials' attributes complement one another resulting in superior performance in the unrelenting sand and gravel, mining and grain industries. Designed to withstand severe abrasion, Ceraflex Panels are excellent for high-volume impact points such as belt transitions (turnheads) and belt overshots. In documented side-by-side comparisons, Ceraflex panels were able to handle over 288,000 tons of -1 in./ 2.54 cm. crushed rock, outlasting AR plate by up to 5X.

WHAT MAKES CERAFLEX TOUGH TO BEAT?

- Modular systems allow easy replacement in high-wear areas
- Available with stud bolt and weldable installation
- Panels available in modular shapes and standard sizes
- Cushioning urethane layer prevents tile breakage
- Extremely high-volume sliding abrasion with minor mass impact (small to medium aggregate)

Ceraflex Panels are made to order to your specifications and can be bolted or welded into place. Operating temperature range is -40°F/-4°C to +225°F/+107°C.

RHINO HYDE PRODUCT LINE



URAMIC

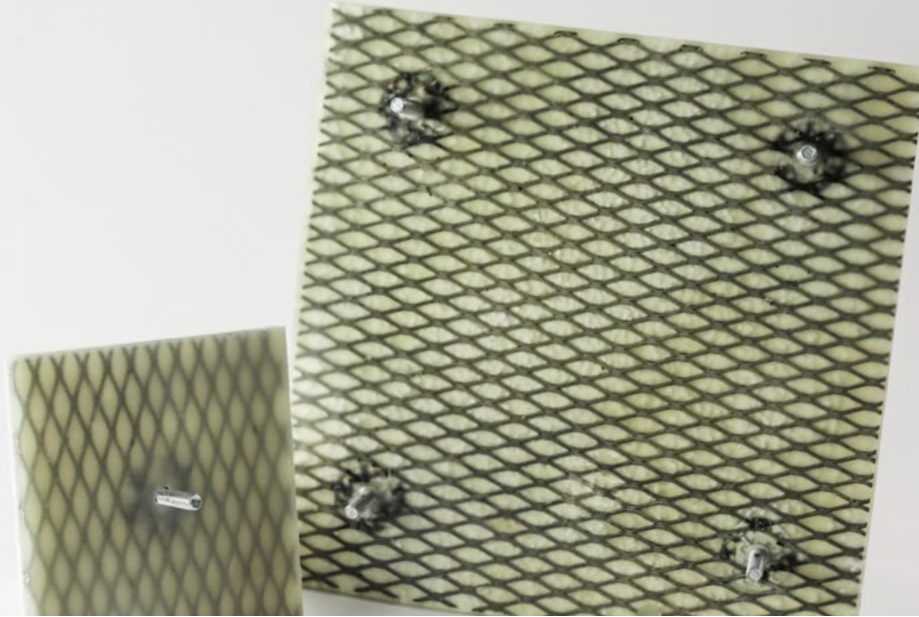
Where neither ceramic nor polyurethane alone can do the job, Uramic Panels are the ultimate solution for applications where severe abrasion is an issue. That's because Uramic Panels combine the superior cut and abrasion resistance of ceramic tile with the impact resistance and resiliency of Rhino Hyde. For decades in the aggregate, coal, fly ash, glass, grain, gravel, cement and other industries, our panels have successfully replaced plain or weldable ceramic tile in areas experiencing frequent tile breakage.

RUBEMIC

Rubemic liners have been developed especially for extreme conditions in mining, steel, metallurgy, and other severe applications. The liners feature high abrasion resistance provided by high-alumina ceramics, combined with the impact cushioning characteristics of rubber.

WHAT MAKES URAMIC TOUGH TO BEAT?

- No fabrication, cutting or machining needed to install
- Studded for fast, easy bolt-in installation
- Eliminates the time and mess of gluing individual ceramic tiles
- Reduces downtime, labor costs and waste
- Complies with the FDA standards for handling dry bulk foods
- Recommended for chutes, belt overshot areas, hoppers, impact areas, deflector plates and transfer areas
- Panels are manufactured in a modular design to the dimensions specified for your application
- Also available in high-temp material



RHINO TILE

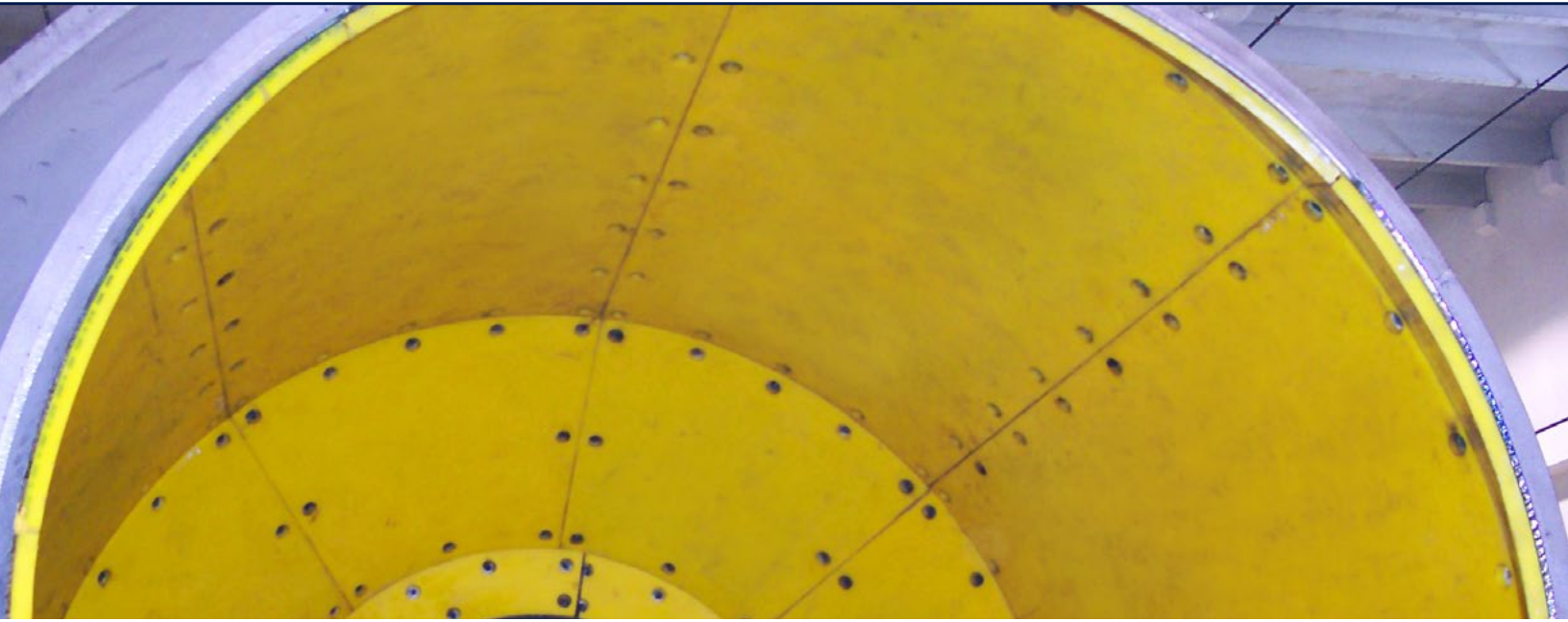
Rhino Tile is designed to withstand high-volume impact and reduce the frequency of change-outs. Unlike the name suggests, Rhino Tile isn't tile at all — rather it's a one-piece, seamless, ceramic-wear surface bonded to a bed of the most innovative urethane chemistry available.

Produced in surfaces up to 10 sq. ft./3 sq. m., Rhino Tile has no individual pieces to chip, fall out or come unglued, clogging the spout or contaminating the product stream. Unlike any ceramic tile product on the market, Rhino Tile won't shatter under pressure or on impact, thanks to its shock-absorbing bed of specialty urethane. In fact, it's specially designed to dent before shattering — giving without breaking means longer life, less maintenance and greater productivity.

- This revolutionary product features a unique blend of three proprietary urethane polymers plus a high alumina ceramic media. Not only will Rhino Tile come custom made to your specifications, it's malleable for added flexibility.
- What's more, you avoid time-consuming installation with messy silicones and nibbling tools.
- Ideal for lining turnheads, impact pads or areas that are difficult to access for repair, Rhino Tile performs in a wide range of temperatures (-40°F/-4°C to +180°F/+82°C).

WHAT MAKES OUR RHINO TILE TOUGH TO BEAT?

- Minimal surface prep — no glue mess
- Will not chip, crack or pop out
- Magnets provide fast, easy installation
- For use as full liner or patch in high-wear area
- Fast replacement for broken or missing tiles



SUPER HYDE WELDABLE LINER

For decades, Rhino Hyde has been a respected leader in the polyurethane concrete drum lining field. With our in-house material blending capabilities, our superior knowledge in polyurethane chemistry and our patented engineering designs, we bring you the next generation of the weldable liner — the Super Hyde.

WHAT MAKES OUR SUPER HYDE WELDABLE LINER TOUGH TO BEAT?

- Saves up to 12 hours of installation time
- Features anti-hydrolysis formula
- Designed to protect against concrete creep
- ~66% fewer weld plates over the standard weldable line
- Homogeneous build is guaranteed to not delaminate
- Proven reliability for 40+ years
- Also available as a standard weldable liner
- Available standard or custom

RHINO HYDE PRODUCT LINE



CENTRAL BATCH PLANT LINER

Looking for liners with exceptional wear? Want to ensure concrete doesn't stick to your liner? Providing urethane drum liners to the concrete industry for over 25 years, Rhino Hyde offers custom- and OEM-specification liners manufactured to size for easy installation. Our advanced plug weld system provides a simple attachment method, and the liner is equipped with steel weld plates embedded in the urethane, strategically placed throughout each piece.

Rhino Hyde liners are available for these OEM drums:

REX, Con-E-Co, Ross, C.S. Johnson, Erie Strayer, Terex, T.L. Smith, Vince Hagen, Inventure, Johnson Ross, McNeilus and more.

WHAT MAKES OUR CENTRAL BATCH PLANT LINER TOUGH TO BEAT?

- Industry's best performance warranty — guaranteed for the life of the liner
- Outstanding resistance to wear, cuts and tears
- Resists sticking and build-up problems
- Lighter than steel liners
- Advanced knock-in weld installation
- Full drum liner and blade and tip sets available
- Homogeneous material means no inter-ply delamination

RHINO HYDE PRODUCT LINE



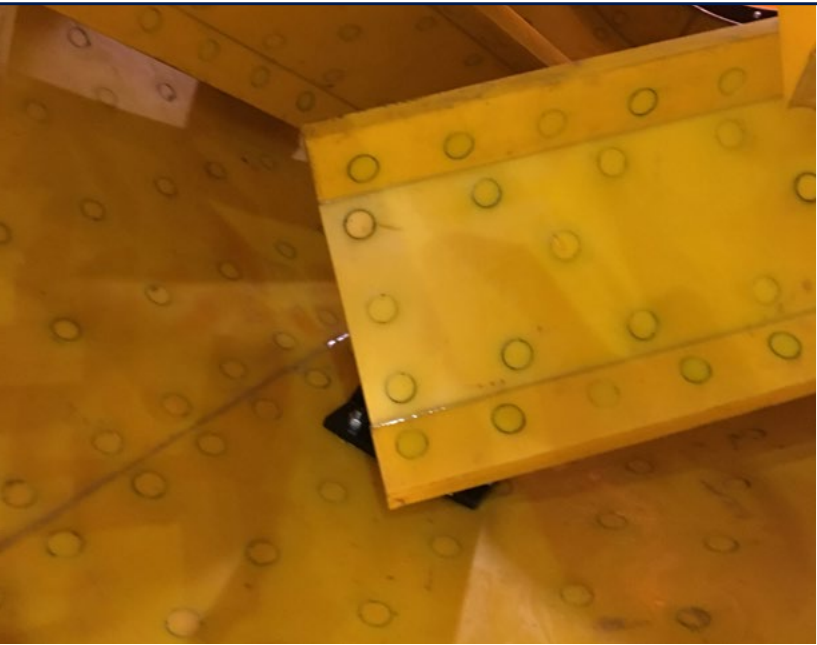
TRUCK HOPPER LINER

We know the importance of lining equipment in today's industries. If proper lining materials aren't used, your equipment may suffer, which can create extended downtime for your personnel. We developed our Rhino Hyde Truck Charge Hopper and Discharge Chute Liners to help extend your equipment life and keep your production moving.

WHAT MAKES OUR TRUCK HOPPER LINER TOUGH TO BEAT?

- One-piece, seamless design
- Specially formulated to resist wear and sticking
- Lightweight build is only about 50 lbs./23 kg.
- Easy installation — 1 hour on average
- Available in either bolt-in or weld-in
- 5/16 in./0.79 cm. - 0.5 in./1.27 cm. thickness delivers extended wear life
- Reduced clean-up time
- Non-contoured liners available for high mount hoppers and lower main chutes
- Fits all makes of concrete trucks: London, McNeilus, Advance, Oshkosh and others

RHINO HYDE PRODUCT LINE



RHINO HYDE LINER WITH RHINO HYDE LINER PLUG

Used throughout the aggregate industry in discharge chutes, holding bins, turnhead liners and spouts, Rhino Hyde Liners reduce material sticking, reduce noise and provide protection for underlying steel liners. We design modular shapes up to 4 in./10 cm. thick based off of your approved drawings, so when you're ready to install, there's no cutting required, reducing time and strain on maintenance personnel.

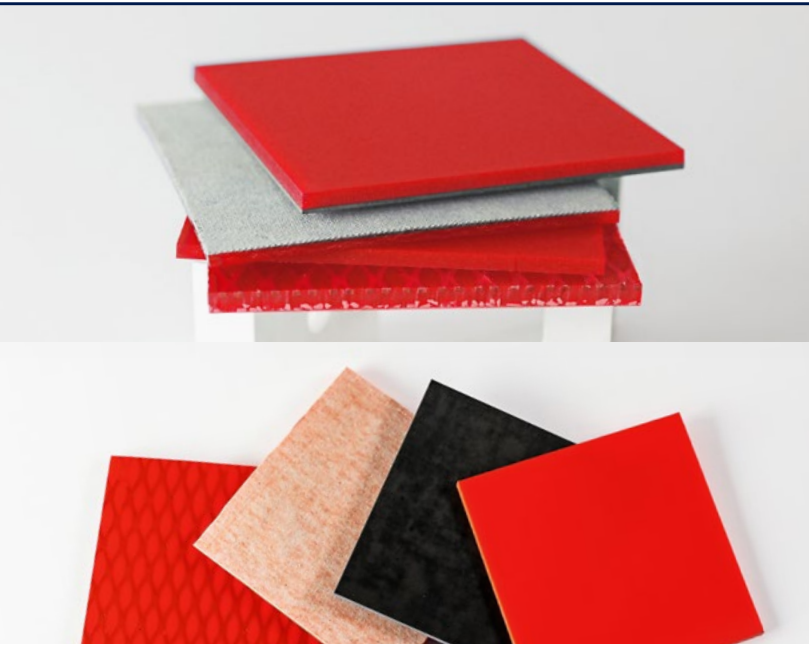
WHAT MAKES OUR RHINO HYDE LINER TOUGH TO BEAT?

- Easy to install with MIG, TIG or stick welding — no holes to drill
- Outperforms steel and rubber in most applications
- Available in custom or modular shapes — no cutting or added fabrication
- Weld plates are capped with glue-in or knock-in urethane plugs
- Outstanding wear, cut and tear resistance

Rhino Hyde Liners are available in modular shaped/standard size panels. Panels are available in weld-in, bolt-in and magnetic attachment systems.

Contact a sales representative to discuss durometer and formulation recommendations.

RHINO HYDE PRODUCT LINE



HYDRO HYDE

All-red Hydro Hyde is made using the same long-lasting, premium urethane formulation as High Energy Orange — that means durability is never in question.

WHAT MAKES HYDRO HYDE TOUGH TO BEAT?

- Lightweight build
- Low coefficient of friction for less sticking and build-up
- Longer wear in wet, humid environments
- Available in rolls or sheets

PAN MIXER LINER

Ready to increase the wear of your liner and reduce maintenance? Our urethane Pan Mixer Liners are guaranteed to thoroughly protect your mixer while significantly outwearing your current steel liner.

You won't find a longer-lasting product from any other manufacturer.

WHAT MAKES OUR PAN MIXER LINER TOUGH TO BEAT?

- Outperforms steel and rubber
- Proven to extend wearability
- Outstanding cut/tear resistance
- Resists sticking and build-up issues inherent to rubber and steel liners
- Easier to clean and quieter than steel liners
- Advanced knock-in weld installation system
- Lighter than steel for ease of handling
- Reduces maintenance time and increases production
- Fits: Mixer Systems, Rotto Mix, Haarup, Skako, Teka, Turbine, Voeller, Turmac, Siemem, Wiggert, Fejmert and many others

RHINO HYDE PRODUCT LINE



BELT SKIRTING / BELT WIPER

ORIGINAL

Long lasting and available in a variety of durometers.

DUAL DUROMETER

Two urethanes fused together during the molding process to create a permanent singular thickness.

TRI-LEVEL

Three urethanes fused together and designed to be rigid, yet uniquely flexible.

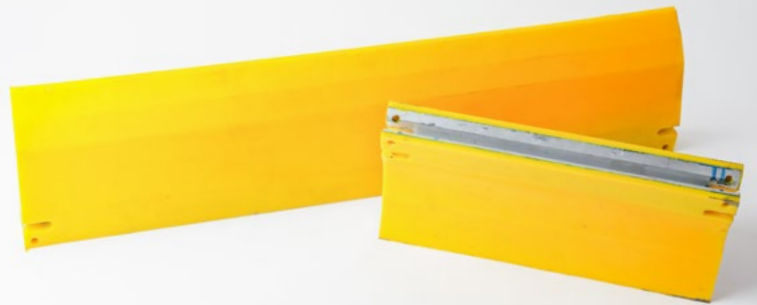
- **BELT SKIRTING*** is designed to mitigate material spillage and dust control, reduce drag, prevent material build-up, and deliver longer belt life, so you can keep your product moving.
- **BELT WIPER** is designed to wipe away heavier and larger particles. Softer urethane in the center provides excellent cleaning properties without excessive belt wear.

WHAT MAKES OUR BELT SKIRTING AND BELT WIPER TOUGH TO BEAT?

- Compatible with most skirt clamping systems
- Custom sizes and dimensions available
- Available with ceramic beads
- Multiple in-house formulations for standard or high-speed belts
- Available with magnets
- Formulated to outlast rubber and steel
- Lower coefficient of friction than rubber
- Extends the life of your equipment
- Also available beveled

*Belt skirting is also known as flashing.

RHINO HYDE PRODUCT LINE



CLASSIFIER SHOES

Manufactured from our proprietary urethane formulation, Rhino Hyde urethane classifier shoes assure you of better cut and tear resistance compared to rubber. Rubber shoes require a metal backing which could lead to delamination. Rhino Hyde won't delaminate, "chunk" or rip away, making our classifier shoes the ideal solution to abrasion problems inherent to screw conveyor applications. What's more, they're lighter than and easier to install than Ni-Hard steel.

WHAT MAKES OUR CLASSIFIER SHOES TOUGH TO BEAT?

- Interchangeable with right- or left-hand screws
- Return to their original shape when bent or distorted
- Come standard with weld plates or solid metal backing
- Outlast metal shoes up to 3X
- Available in a variety of styles and replacement sizes
- Conform to the auger's contour when bolted in
- Easy, drop-in installation
- Custom-blended formulation is shatterproof and resilient
- Shoes with solid metal backing are bent left and/or right
- Lightweight design means less wear on motor
- Custom built in-house to your exact specifications

RHINO BLADE

Made with genuine Rhino Hyde polyurethane, all our blades exhibit excellent wear resistance and resilience. Using the recovery principles of a high-memory synthetic material as the source for the tensioning force, we developed the Rhino Blade Tensioning System to deliver excellent belt cleaning and cost efficiency. Unlike many other systems using pneumatics or springs, the Rhino Blade System has fewer moving parts, making it far more reliable and virtually maintenance free. So, in addition to longer blade life, you can expect thorough and even belt cleaning in both wet and dry conditions.

Rhino Blade Tensioning Systems are compact, requiring minimal space for installation. With the extended sidewalls provided, and with fewer than ten major parts in the tensioning assembly, the average installation time for a complete unit is less than 30 minutes. Once the tensioning unit has been installed, the Rhino Blade can be replaced in under 10 minutes with minimal experience required.

WHAT MAKES OUR RHINO BLADE TOUGH TO BEAT?

- Custom made to fit your application
- Quick and easy blade replacement
- Highly resistant to cuts and tears
- Tension is consistent through linear dampening
- Rhino Blades can be made to fit most existing primary scrapers

RHINO HYDE ACCESSORIES



BAR RAIL LINERS

Rhino Hyde bar rail liners are designed to maintain the integrity of the screen deck for the ultimate in protection. Made with our in-house blended urethane, our bar rail liners stand up to significant levels of shock and vibration.

WHAT MAKES OUR BAR RAIL LINERS TOUGH TO BEAT?

- Keep screens from shifting
- Corrosion-resistant formulation
- Protect and extend screen and deck life
- Won't roll off the bar
- Abrasion-resistant urethane won't cut or tear
- Outlasts rubber by up to 7X
- Available in mine grade and standard heavy duty
- Available in a range of sizes and dimensions

RHINO HYDE ACCESSORIES



Spray Deflectors ▪ **Wedges & Angle Clips** ▪ **Pins & Sleeves** ▪ **J-Bolts & Donuts**
U-Bolts & Donuts ▪ **Diverter Strips** ▪ **Knock-in Bars** ▪ **Urethane-Covered Tension Rails**
Dams ▪ **Stringers** ▪ **Side Liners** ▪ **Pipe Seal** ▪ **and many more**

RHINO HYDE PRODUCT LINE



RHINO HYDE SPRAY

Rhino Hyde Spray 8500 AR is a revolutionary abrasion- and corrosion-resistant material formulated to prolong the life of aggregate equipment. Applied virtually anywhere, it creates a non-stick surface that eliminates corrosion — if you can reach it, you can spray it. An accurate surface prep and you're good to go. Call your representative for your nearest certified applicator.

WHAT MAKES RHINO HYDE SPRAY TOUGH TO BEAT?

- Waterproof, seamless and resilient formulation
- Weather tolerant — cures even in high humidity
- Excellent resistance to thermal shock
- Resistant to various solvents, caustics and mild acids
- Low permeability with superior sustainability
- Reduces noise when compared to steel

CROSSOVER PADS

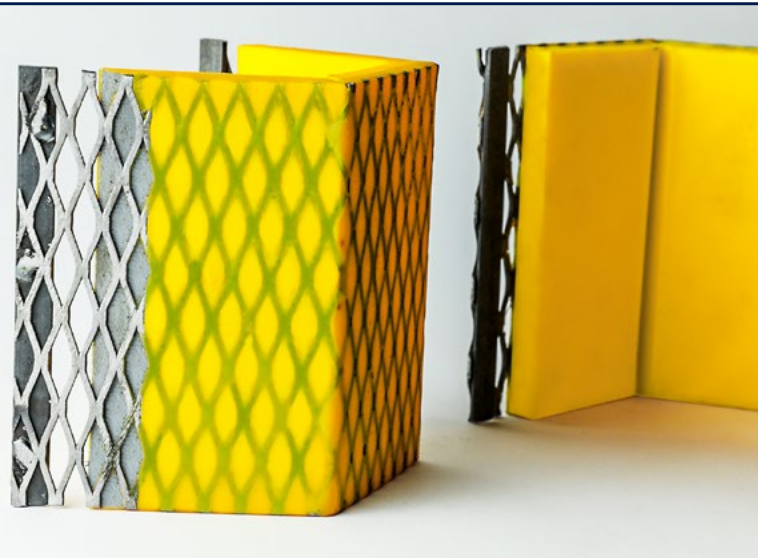
Whether you're using a pickup or mine haul truck, Rhino Hyde Crossover Pads provide excellent protection of cables, hydraulic hoses and compressed airlines. We've produced these heavy duty pads for decades and our material is proven to stand up to oil, chemicals, abrasion and harsh environments.



WHAT MAKES OUR CROSSOVER PADS TOUGH TO BEAT?

- Easily transportable by molded-in chains on both ends
- Tested to resist oil, chemicals, cuts, tears and extreme temps (-40°F/-40°C, +170°F/+77°C)
- High visibility
- Durable urethane formulation
- Withstand thousands of pounds and constant pounding
- Available styles to lay under or over your lines
- Reduced costs and improved safety associated with buried or overhead cables

RHINO HYDE PRODUCT LINE



COIL SADDLES

Available in various sizes, these mats provide safe storage of large metal coils. They're uniquely saddle-shaped to collect any oil that drains out onto the mat.

WHAT MAKES OUR COIL SADDLES TOUGH TO BEAT?

- Easy, safe storage of brass, steel and aluminum coils
- Custom molded to your specifications
- Prevent damage to outer layers of coils
- Available with oil reservoirs



FLUME LINER

Made of polyurethane-reinforced expanded metal and finger guards, our Flume Liners feature rigid construction. Our self-supporting Flume Liners are specially designed for lining chutes, gravity open channels, and other applications with water and fine-particle mixtures.

IMPACT PAD

Our resilient Impact Pads are designed specifically for use in bulk materials handling applications like rock, gravel, sand, stone, soybean, corn, wheat and coal. As conveying equipment is traditionally made of metal, urethane Impact Pads help reduce noise as well as prevent damage to equipment at discharge areas.

RHINO HYDE PRODUCT LINE



DISC FILTER SECTORS

Used in taconite, copper, zinc, lead, uranium, coal and other mining industries to remove the moisture from their slurries, Rhino Hyde Disc Filter Sectors are built to perform. Featuring our proprietary urethane formulation, they're lightweight, won't corrode, and are designed to operate in a wide range of pHs and temperatures. Proven to outlast plastic, steel and stainless steel in more filter sector applications, polyurethane is guaranteed not to rust. What's more, its superior wearability becomes especially handy in the high-wear neck-shoulder area.

The innovative rounded-peg design provides greater open area allowing more moisture to be drawn from the slurry cake. Lower cake moisture in the drying stage results in a better quality product, increased production and decreased shipping costs. Other benefits include improved bag support, effective drainage and extended bag life.

WHAT MAKES OUR DISC FILTER SECTORS TOUGH TO BEAT?

- Outlasts stainless sectors by up to 3X
- Performs in a wide range of pH and temperatures
- Replaceable urethane neck
- Available for Eimco, Scanmec and Dorr-Oliver brand filters
- Guaranteed to not rust or corrode

SNOW PLOW BLADES

Don't get stuck in the cold with a poorly performing blade. Made of strong, resilient Rhino Hyde urethane, Snow Plow Blades are the choice of many airports across the country. They're specially designed to keep snow, ice and sand from sticking to the blade, so you can get the job done faster.

WHAT MAKES OUR SNOW PLOW BLADES TOUGH TO BEAT?

- Squeegee action for a close, clean, even surface sweep
- Lightweight blades are easy to handle and install
- Reduces noise — no metal blade scraping pavement
- Gentle on fragile surfaces such as runway lights
- Won't rust or dent like metal blades
- Proven effective through years of service
- Reversible blades for extended blade life

RHINO HYDE LINERS

CANADA

East: +1 800-325-5993
West: +1 800-661-0362
info@haverniagara.ca

BRAZIL

Equipment: +55 (19) 3879-9100
Screen Media: +55 (31) 3661-1371
Service: +55 (31) 3661-3508
info@haverniagara.com.br

GERMANY

+49 (0) 251 9793-0
info@haverniagara.com

